

A collection of cacao pods in various stages of ripeness, from green to deep red, are scattered across a dark, textured wooden surface. The pods are arranged in a way that frames the central text.

LUKER
Chocolate®



WHO WE ARE

Based in _____
COLOMBIA
South America



We are a Colombian family owned business with 110 years of tradition. We are a B4B -Business for Business- chocolate manufacturer and we provide a one of a kind chocolate as an ingredient for other food companies, and manufacture finished products for other brands.

INGREDIENTS CHOCOLATE COUVERTURES



FINISHED PRODUCT



WHO WE ARE

113

Years of experience in the
CHOCOLATE INDUSTRY

We deliver a superior taste by using Single Origin Cacao Fino de Aroma. We can guarantee our Business sustainability, transparency, supply and consistency, by Integrating the entire value chain from the first seed to the final product.

SUPPLY

**COCOA
TREE**



PROCESSING

CHOCOLATE



CUSTOMERS

**FINISHED
PRODUCT**



**INTEGRATION OF
THE VALUE CHAIN**



- + SOCIAL IMPACT**
- + SUSTAINABILITY**
- + SHARED VALUE**
- + INNOVATION**

AROUND THE WORLD

LUKER
Chocolate®

42

Countries using
our chocolate.

Comercial offices
in **COLOMBIA,
BELGIUM, USA**



Manufacturing
facility in Bogotá.



R&D
Center in
Santagueda,
Colombia.

25.000 TON
2018 CHOCOLATE
PRODUCTION

Members of the
 World Cocoa
Foundation

Direct allies of



USAID
FROM THE AMERICAN PEOPLE

*Metrics conversion: 1 TON = 2,200 LBS



OUR PURPOSE



TO MAKE THE WORLD A BETTER PLACE
BY HELPING OTHER COMPANIES CREATE
PURPOSE DRIVEN PRODUCTS USING OUR
CHOCOLATE AS A TOOL FOR CHANGE.





THE CHOCOLATE DREAM:

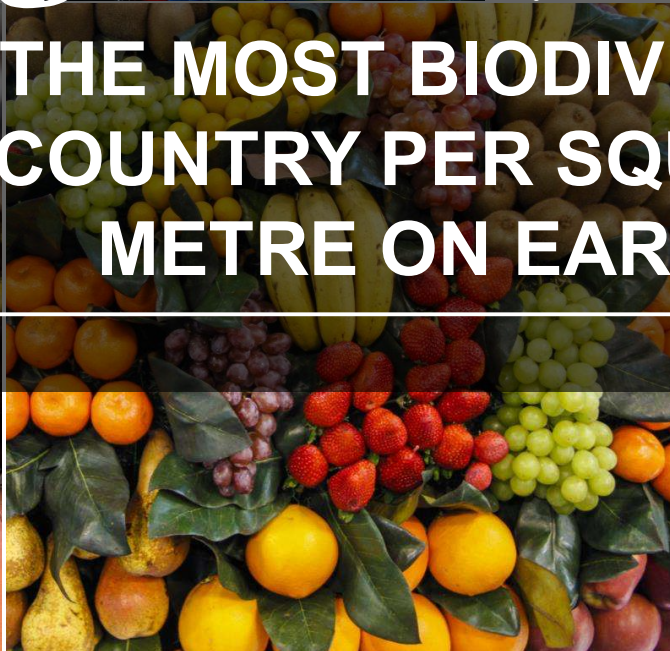
**Driving Change in the cocoa-producing
regions of Colombia**





Colombia

THE MOST BIODIVERSE
COUNTRY PER SQUARE
METRE ON EARTH



How we do it?

Small farmers



LUKER
Chocolate



FARMER

- We work directly with more than 50 small farmer cooperatives in Colombia representing 5,000 families.
- We train 700 farmers per year at our research center (Granja Luker).
- 6 cocoa purchasing offices around Colombia.

Our own cacao forest



CROP

- Since 2011 we started our own cocoa forest in regions in Colombia heavily impacted by the armed conflict. We have 3 peace building projects in different regions.
- **Necoclí:** 550 hectares.
- **Casanare:** 1,000 hectares.
- **Huila:** 45 hectares.



WORKERS



NEIGHBOR
COMMUNITY

*Metrics conversion: 1 HA = 2.5 acres

Our own cacao forest

Necoclí



WORKERS
+ NEIGHBORING COMMUNITIES

*Metrics conversion: 1 HA = 2.5 acres

	2011	2018
LAND USE		
CATTLE FARM	5	250
COCOA FOREST	LESS THAN 2 HA	600 THOUSAND
WORKERS		
TREES		



Our own cacao forest

Casanare



*Metrics conversion: 1 HA = 2.5 acres



FORMAL JOBS

500



AGROFORESTRY SYSTEM

1000
HECTARES



Our own cacao forest

ANCHOR PLANTATION

Huila

451 ha

DEMONSTRATIVE
CROP



350
HA NEW
COCOA



450
RENEWED CROPS



375
FAMILIES
BENEFITED

*Metrics conversion: 1 HA = 2.5 acres





COCOA AND PEACE




Education




The Power of Education

THIS PARTNERSHIP SUPPORTS



Vehicles for Learning

THIS PARTNERSHIP SUPPORTS



New School

THIS PARTNERSHIP SUPPORTS





ARTS AND CULTURE

1



Cocoa Festival



2





ENVIRONMENT



2800.000

New trees 2020

GLOBAL BIG DAYS
necocli
'2018'

OVER 150 SPECIES
SPOTTED IN 16 HOURS





ENTREPRENEURSHIP

1



Dream Journey

THIS
PROJECT
SUPPORTS



ALLY



EXECUTES



2



Empowering Dreams

THIS
PROJECT
SUPPORTS



ALLY



EXECUTES





SOCIAL INNOVATION & ENTREPRENEURSHIP



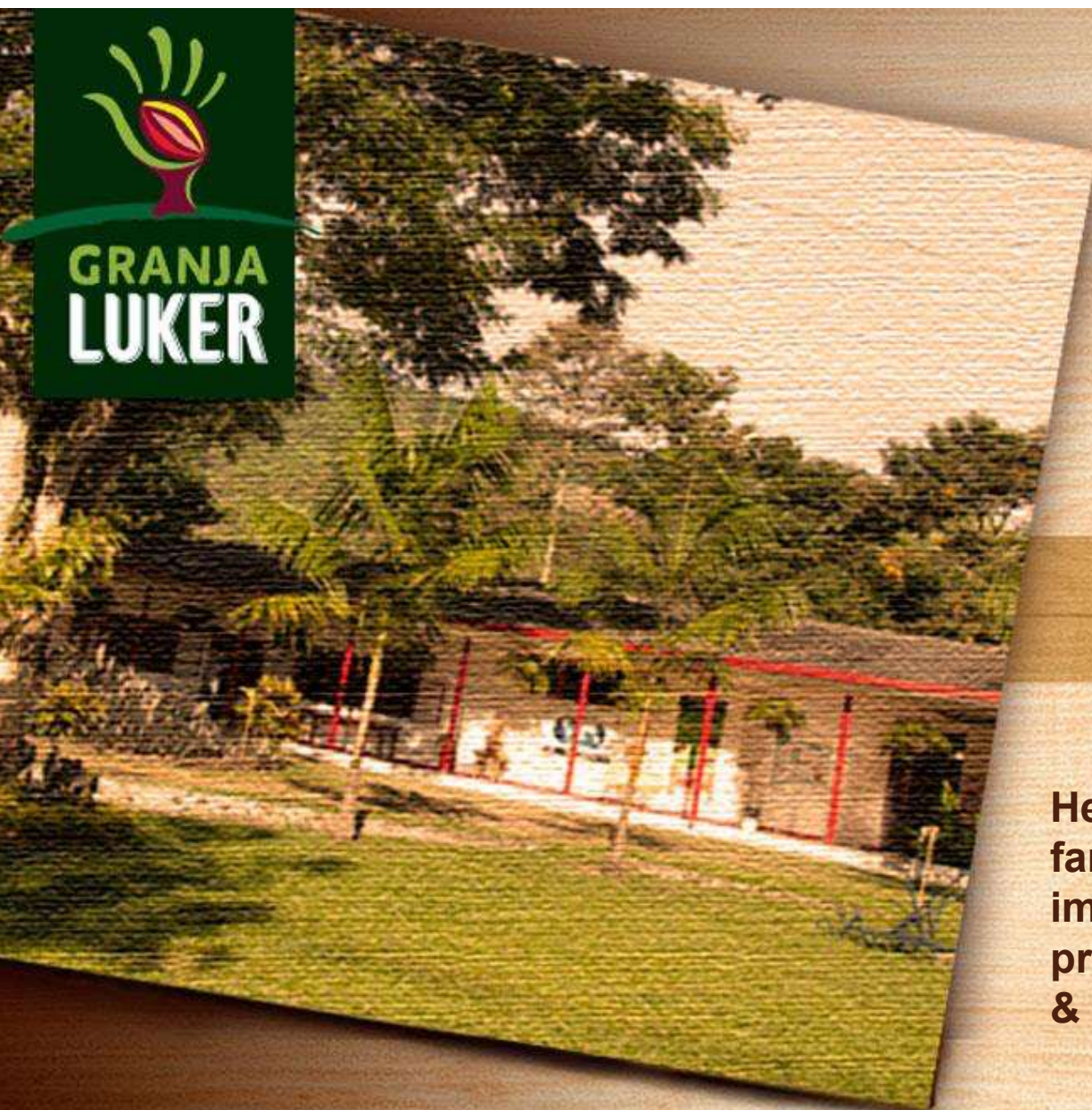
CHOCOHABS





CHOCOLAB





FOUNDED IN
1962

**Applied Agricultural
Research & Training Center**

**700 FARMERS TRAINED
PER YEAR**

Help small
farmers
improve
productivity
& quality



Cocoa Clusters



AGROINDUSTRIAL CULTIVATION

- Generation of formal employment.
- Multivalent training in agricultural communities.
- Agroforestry systems: regeneration and environmental conservation.
- Infrastructure development.

ANCHOR MODEL

- Promotes small farmers.
- Technical assistance
- Strengthening of the value chain.
- Social and economic development of communities:
 - Education
 - Entrepreneurship
- Triple impact traceability

Cluster COMPONENTS

GLOBAL ALIGNMENT



Cocoa &
Forests
Initiative

QUALITY AND PRODUCTIVITY

small producers
+
our cocoa crops

STRENGTHENED VALUE CHAIN

Organizational
capabilities
+
Innovation
in the supply chain

SOCIAL AND ECONOMIC DEVELOPMENT

Education
+
Entrepreneurship
+
Soft skills
+
culture of legality

CONSERVATION AND REGENERATION OF THE ENVIRONMENT

Sustainable
agriculture
+
Agroforestry
systems



WWW.THECHOCOLATEDREAM.CO

**IS OUR LONG TERM
VISION TO DRIVE CHANGE
IN THE COCOA-PRODUCING
TERRITORIES WHERE WE WORK**

Luker Chocolate's innovation in sustainability and its shared value business model has been recognized by several organizations:



**BEST SHARED VALUE INITIATIVE
IN COLOMBIA 2018**



**BEST CSR PROGRAM IN
COLOMBIA
2018**



**FINALIST SUSTAINABILITY
INITIATIVE OF THE YEAR 2018**



**SELECTED BY USAID AS DIRECT ALLY
FOR A 5 YEAR PROJECT FOCUSED IN
RURAL DEVELOPMENT**



**COLOMBIAN ENTREPRENEUR AWARD
OF THE YEAR 2019 IN THE MARIPOSA DE
LORENZ CATEGORY. ANDI**



WE NEED THE HELP OF MANY TO GO FURTHER, SINCE
NO DREAM IS IMPOSSIBLE IF WE BUILD IT TOGETHER.
THESE ARE OUR ALLIES:

Manizales+

Fundación
Saldarriaga
Concha

FUNDACIÓN
LUKER

UNIVERSIDAD
EAFIT®

USAID
FROM THE AMERICAN PEOPLE

GO UNTRACEABLE.COM
"CONSTRUCTIVE LOCAL EXPERIENCES"

Universidad de
los Andes
Colombia

Universidad del
Rosario
Escuela de
Administración

Fundación
Bancolombia

Colombia
Fernández

Portafolio
verde
Innovación para el Desarrollo Sostenible™

FUNDACIÓN
Orbis
Pintaco
El Valor de la Calidad

Sistema
B

FUNDACIÓN
MI SANGRE

ECOSISTEMA
JAGUAR

FIP
FUNDACIÓN IDEAS PARA LA PAZ

JellyShot

PEDALAZOS
QUE UNEN
PUEBLOS

enel

LUKER
Chocolate®



**LET'S BUILD
THE CHOCOLATE DREAM
TOGETHER**

www.thechocolatedream.co